



consulting-available-from-infinity-turbine-for-development-and-design

<https://infinityturbine.com/consulting-available-from-infinity-turbine-for-development-and-design.html>

**Infinity Turbine
LLC**

[TEL] 608-238-6001

[Email] greg@infinityturbine.com

Consulting Available from Infinity Turbine LLC

Company Name: Infinity Turbine LLC

Product: Waste Heat to Energy Systems and Technology

Working Fluid: Refrigerants, water, and CO2

Machine: ORC and ROT Radial Outflow Turbine System

Industry: Energy

Applications: Waste heat to power, utilities, server farms, bitcoin mining, hot geothermal

High Technology Uses: Converting waste heat to power starting at 30C.

Machine Features: One moving part and solid state turbine technology.

Machine Runs On: Single phase 220V power and liquid CO2.

Other Technology: Tribo effect power, hydrodynamic cavitation hot water power and extraction. Modular block technology. Gas leverage turbine for production of fuels from liquid CO2.



This webpage QR code

PDF Version of the webpage (maximum 10 pages)

Need Strategy? Use our Consulting and analyst services

Infinity Turbine LLC is pleased to announce its consulting and analyst services. We present data in logical, easy to understand format with links for additional research or verification of data.

Energy: Since 1985, I have worked in the renewable energy industry as a researcher, developing sales and markets, along with many inventions and innovations. A wide breadth of subjects and project development includes some of the following subjects.

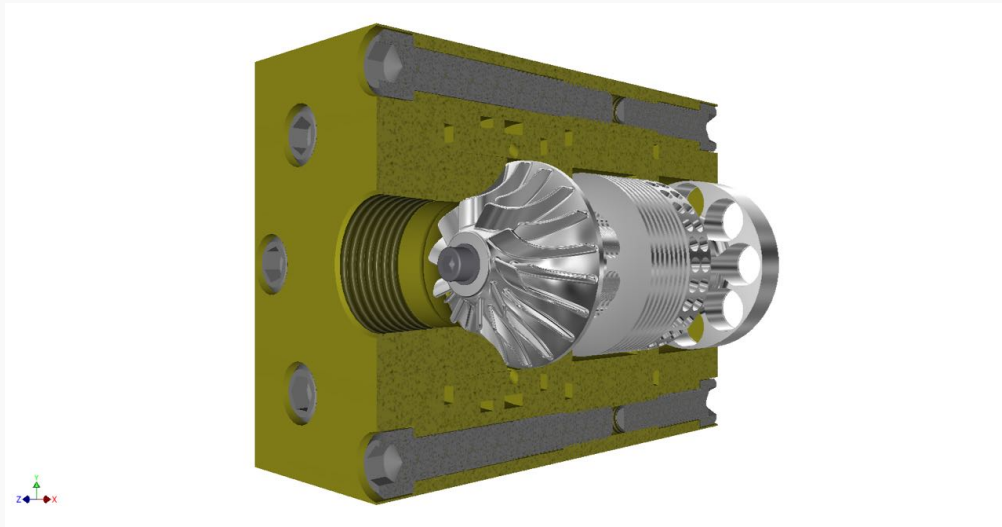
All time is documented and a summary log will be provided when requested.

Consulting is provided via telephone, email, or other media as agreed to in writing (email).

Our consulting services are available on a best efforts basis and are delivered with our utmost dedication. We strive to provide the best possible service and ensure that all time spent is meticulously documented. Upon request, we can furnish a summary log of our activities.

We offer project assessment, engineering studies, turbine design, battery design, supercritical CO2 process strategies, and more.

We've worked on steam engines to supercritical CO2 turbines, to tribo-effect no-moving-part energy generation systems.



Consulting

Infinity Turbine LLC is pleased to announce its consulting and analyst services. We have worked in the renewable energy industry as a researcher, developing sales and markets, along with many inventions and innovations.

Sold as-is and provided on a best efforts basis. All time is documented and a summary log will be provided when requested.

Consulting

Infinity Turbine LLC is pleased to announce its consulting and analyst services. We have worked in the renewable energy industry as a researcher, developing sales and markets, along with many inventions and innovations.

Sold as-is and provided on a best efforts basis. All time is documented and a summary log will be provided when requested.



Copyright 3/13/202 Infinity Turbine LLC

History

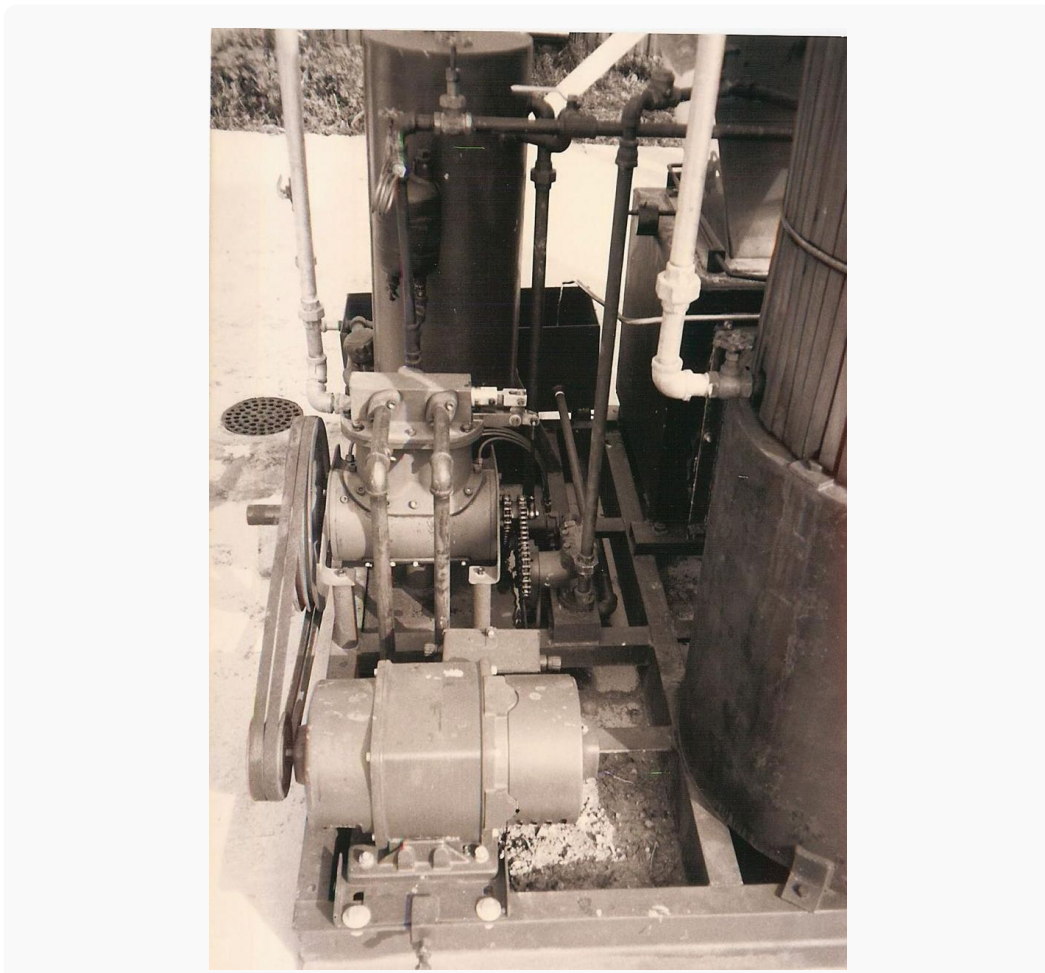
Wood Energy:

From 1985 until 2008: Doing business as Global Energy, developed and sold wood energy (biomass) systems. First with selling Waterwise Gasifiers from New Zealand in 1986, and then branching off into developing and selling my own systems, including steam turbines and steam engines.

Container Kiln (Lumber and Firewood drying): In the mid 1990s, developed and marketed a shipping container lumber/firewood dry kiln system (Container Kiln), which is modular and portable.

NonConventional Fuel Tax Credit: Adapted Section 29 credits for sawmills and wood processors that use wood fired boilers. Biomass is not burned, but oxidized and the gas is burned. Saved customers millions of tax dollars.

Capstone Turbine: Bought and sold Capstone microturbine systems. Experimented with vegetable oil and other combustible liquids in the diesel (liquid fueled) versions.



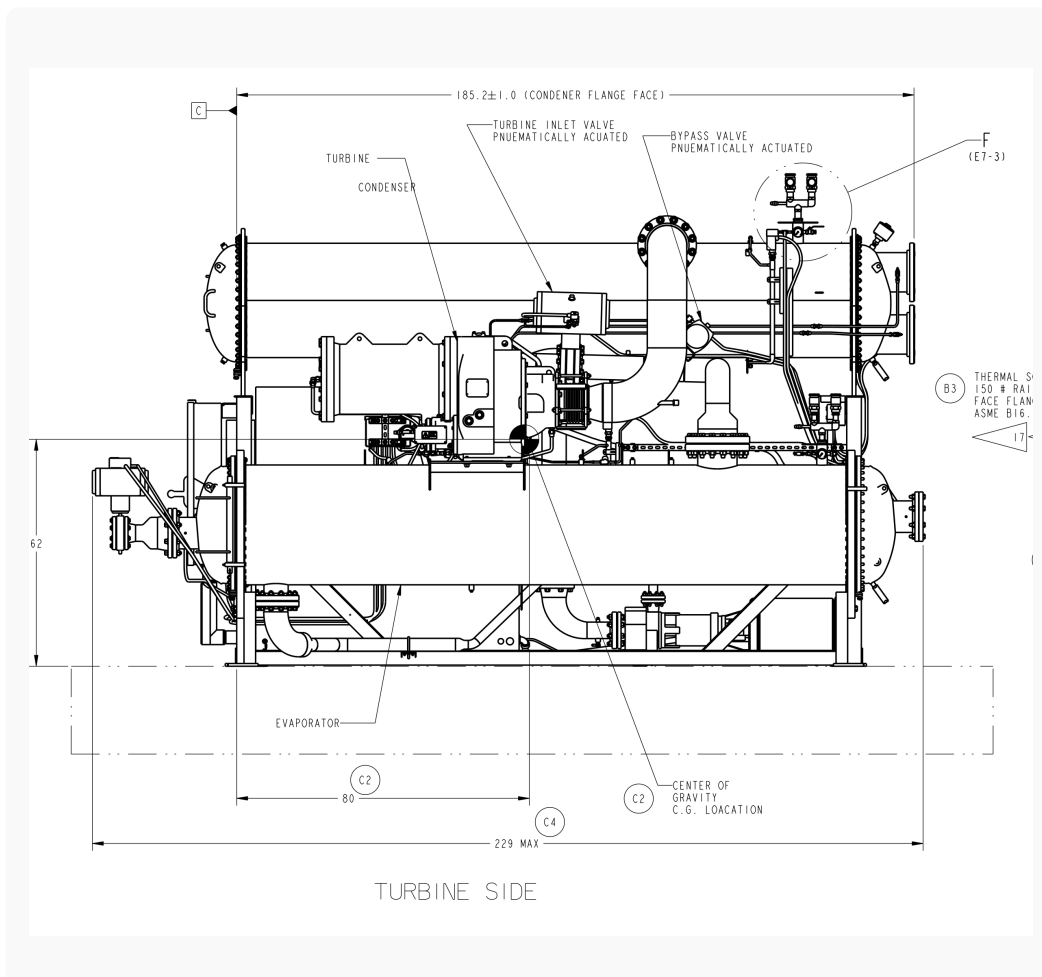
Section 29 Non-Conventional Fuel Credit:

Also in the 1990's developed and assisted groups wanting to get tax credits for landfill gas, as well as wood gas under the Section 29 (non-conventional fuel) tax credit. As a wood energy specialist, I pointed out that wood doesn't burn, but it's actually the gas released from the wood. Many companies saved (or got refunded) millions of tax dollars.



Capstone Turbine Secondary Market:

In 2001 started consulting and selling the Capstone Microturbine (micro distributed grid power generator) and currently buy and sell these turbines into the secondary market.



Gas to Liquids (alcohol fuels) with Ocean Ethanol LLC

In 2004 formed Ocean Ethanol LLC with an investor (John Stevens in Kona, Hawaii) to develop my invention of converting CO₂ into fuel grade ethanol, methanol, and butanol.

With a short development window, we proved we could make alcohol fuel cheaper than existing fuel prices, but investor pulled out within 6 months, since he did not see an immediate return (even though it was projected to take at least 12 months to market).

We were able to produce methanol and butanol from reversing a fuel cell (i.e. input was liquid CO₂, water, and electricity, and output was alcohol).

Catalysts were developed at PNL (Pacific Northwest Labs).

Research was also done simultaneously in Italy, and a lab was able to show we could produce butanol and methanol from liquid CO₂ by reversing a fuel cell.

As a result I was issued two patents for my Modular Fluid Handling Device I and II in my name, and I have sole ownership of patents.

It was this initial research and development into liquid CO₂, that gives us the advantage in the CO₂ extraction field.



Waste Heat to Energy:

In 2008 I started Infinity Turbine LLC to discover, promote, develop, and build waste heat to power (renewable energy) systems. For a number of years, owned and operated a machine shop in Ferndale, Washington (near Bellingham, Washington) with a large Omax waterjet, laser engraver/cutter, Haas vertical milling machine, lathe, welders, shop tools and lots of custom test equipment.

We experimented with most forms of prime movers, including the Tesla Disc Turbine, Sterling Engine, Axial Turbine, Scroll Compressors, Scroll Expanders/Compressors, and finally settled on the Radial Outflow Turbine. We employed the services of Henry Technologies in Canada to build the heat exchangers for our Organic Rankine Cycle systems, and then paired with our turbine generator builds.

The predominant challenges were pressure seals, rotational speed, and moving parts. Basically, if you have more than one moving part, the system will fail. With the interest in CO₂ as the working fluid (to reduce equipment footprint by increasing efficiency and pressure to produce rotational mechanical energy), we started experimenting with liquid CO₂ and phase change. Ultimately, the Holy Grail of power production is to reduce the number of moving parts and seals to a minimum.

We build over 100 CO₂ closed loop botanical extractors, and have lots of experience with Carbon Dioxide.



Solid State Turbine Using Tribo Effect and Electrostatic Precipitation

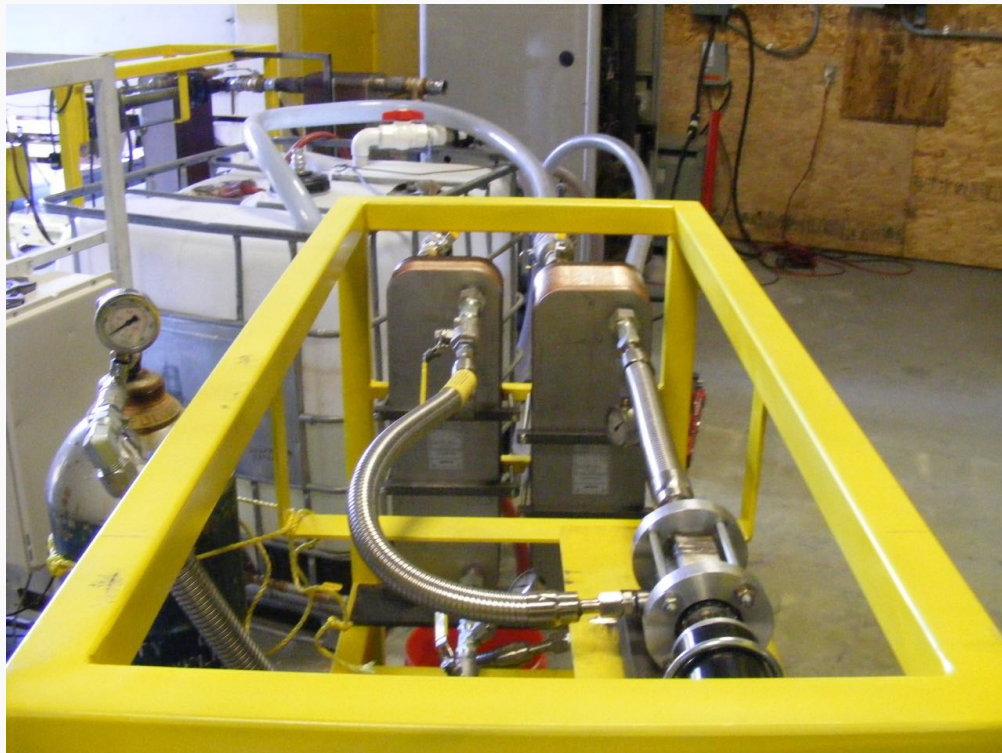
In our CO₂ experiments, we studied the Colorado Springs notes from Nikola Tesla. I found some interesting characteristics of CO₂ as it undergoes phase changes, including a tremendous production of static (DC) electricity. To that end, we started to develop a Solid State Turbine using Tribo Effect.

I found that by using a hybrid polymer material, we could generate static electricity simply by pressure reduction of CO₂ gas. Similar electrostatic effects were seen all the way back to the origins of steam power (coined the Armstrong Effect). The electrodynamic gas two phase system not only pertains to water-steam relations but any gaseous liquid two phase components. It can also cause explosions when using CO₂ fire extinguishers, as seen in a silo explosion in Norway in 2010 and in multiple accidents when the static discharge seeded an explosion, as presented in this article.

Using phase change to our advantage may be able to be the next Holy Grail of energy production. Why? No moving parts. Plus CO₂ goes supercritical at 89F or 30C, which allows utilization of low grade heat (as in the cloud server farms or even solar thermal parking lots).

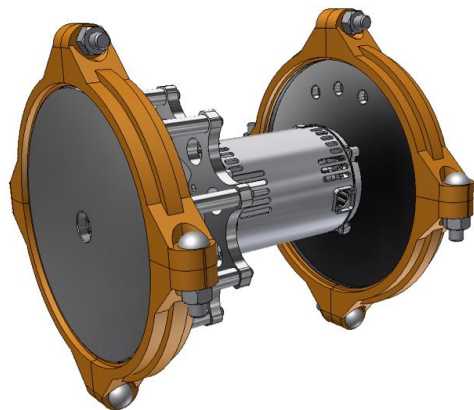
A Solid State Turbine scales up and down easily, and could even be used by Elon Musk for his Solar City or on Tesla cars to power the thermal management system by simply putting up black colored tubes on the roof to capture solar thermal energy.

A new wave of HVAC strategy could combine low temperature solar thermal, along with ground geothermal for cooling (Organic Rankine Cycle needs both heat and cold sink). The ultimate Solid State Turbine deployment would be with a cavitation CO₂ pump, for the least amount of moving parts (one). This is the system which will power us into the next few decades.



Plasma Wing:

Some of the research for Corona Discharge also led to studying plasma generated by a static field. This may be applied to aircraft wings for wing deicing (mitigation) and even some interesting methods of increase lift, which may impact applications for silent drone propellers. You will notice static mitigation on wings by the use of static whips (on the trailing edge of most aircraft wings).



Supercritical CO2 and Water Botanical Extraction Systems:

Starting in 2015, I started Infinity Supercritical, which uses the CO2 phase change process to extract oil from plants. It turns out that the same ORC system, can be used for plant oil extraction.

It was in the past five years with this process development that we perfected CO2 phase change, and actually discovered the corona discharge for ourselves (shop workers were getting shocked while venting CO2).

The CO2 phase change systems can also be used to sterilize PPE, and recycling precious metals from lithium ion batteries (LIB), and some have even proposed it is more valuable than Gold Mining.

