



IT250 Waste Heat to Power System ORC

**Infinity Turbine
LLC**

[TEL] 608-238-6001

[Email] greg@infinityturbine.com

<https://infinityturbine.com/model-it250-organic-rankine-cycle-commercial-system-waste-heat-to-energy.html>

Company Name: Infinity Turbine LLC

Product: IT250 System

Working Fluid: Refrigerants such as R245fa

Machine: ORC and ROT Radial Outflow Turbine System

Industry: Energy

Applications: Waste heat to power, utilities, server farms, bitcoin mining, hot geothermal



This webpage QR code

PDF Version of the webpage (maximum 10 pages)

IT250 250-300 kW Waste Heat to Energy System

The IT250 is designed to produce 250 kW net AC power (typically configured for a Grid-Tie connection). We have produced one IT250 system in the. They take about 6-12 months to complete, and can be shipped in a open top 20 ft. shipping container.

IT250 Revenue based on gross sales or savings, not including cost of acquiring waste heat flow or pumps.

Revenue from IT250 (24 hours x 365 days per year x 250 kWh = 2,190,000 kWh per year):
at \$.20 per kWh = \$438,000 USD per year
at \$.40 per kWh = \$876,000 USD per year
at \$.80 per kWh = \$1,752,000 USD per year





Copyright 5/23/202 Infinity Turbine LLC

Induction or Synch Generator

Our induction AC generators require a grid tie device, which can be found on the link below from Sieb Meyer in Germany.

Induction or Synch Generator

Our induction AC generators require a grid tie device, which can be found on the link below from Sieb Meyer in Germany.



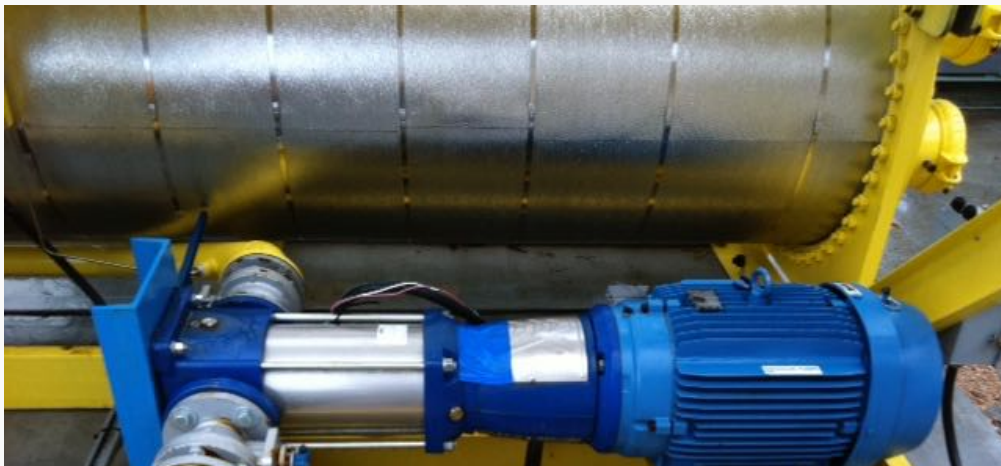


Copyright 5/23/202 Infinity Turbine LLC



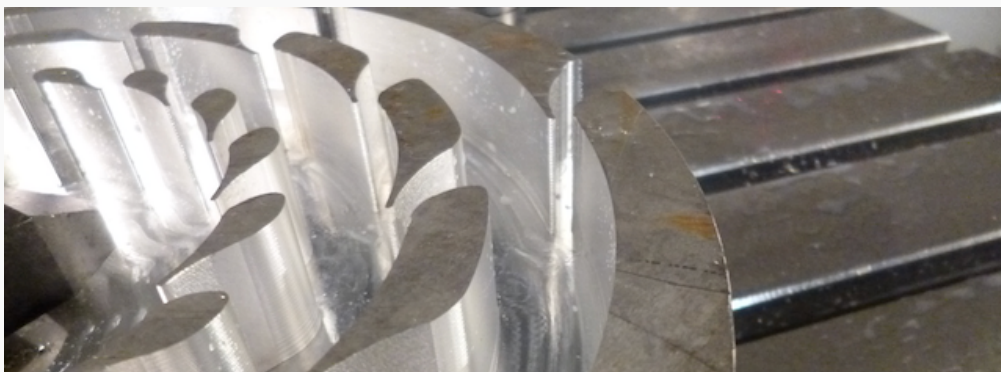


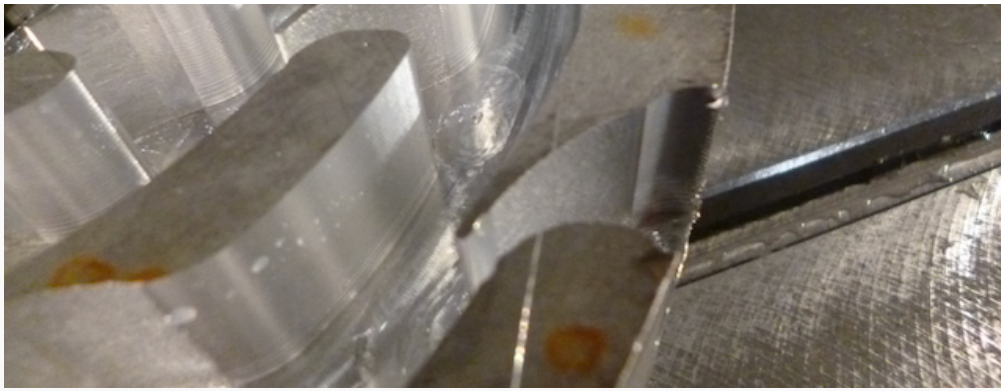
Copyright 5/23/202 Infinity Turbine LLC





Copyright 5/23/202 Infinity Turbine LLC





Copyright 5/23/202 Infinity Turbine LLC
