

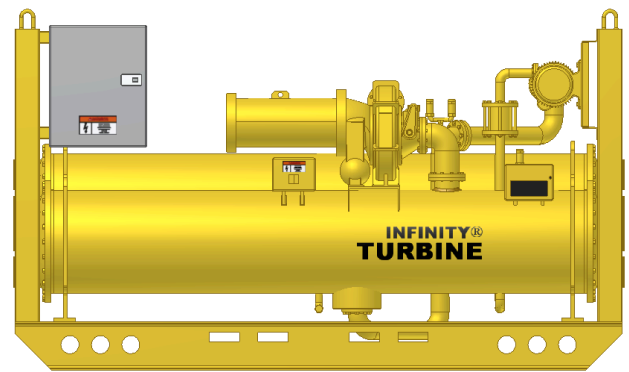
Diesel Engine Generator

Waste Heat to Power via the Infinity Turbine Kilowatts Generated Chart

If you run a diesel generator set or any of the engines below 24/7, you may be able to capture the waste heat to generate additional kilowatts of electricity. In addition, you may reduce or eliminate the HP need to drive your radiator coolant fan.

Exhaust to Power: With an additional waste heat to thermal oil heat exchanger, you can capture the diesel exhaust from the pipe to supply heat to the Infinity turbine. This is about 40 percent of total fuel savings as shown in chart below. For a 100 kilowatt Prime diesel genset, this is about 8 kWe per hour additional power.

Coolant to Power: Pipe straight to the Infinity turbine. This is about 32 percent of total fuel savings as shown in chart below. For a 100 kilowatt Prime diesel genset, this is about 7 kWe per hour additional power.



Copyright 2008 Global Energy and Infinity Turbine LLC

Radiator Fan Savings: This is about 5 percent of your engine HP saved.

For Additional Information Contact:
Infinity Turbine LLC
<http://www.InfinityTurbine.com>
TEL(608) 238-6001

MFG	DIESEL GENERATOR MODEL NUMBER	ENGINE DATA	kWe PRIME	ENGINE RADIATOR EXHAUST COOLANT			TOTAL kWe	
				HP	HP	ORC kWe		ORC kWe
Cummins	DGCB 3422 55 kw	4TB3.9-G4	55	80	3	5	7	12
Kohler	100REOZJB 100 kw Prime	John Deere 6068TF250	100	190	5.6	8	8	16
Caterpillar	135 ekw Prime D150-8	D150-8	135	207	10.7	11	8	19
Kohler	150REOZJC 145 kw Prime	John Deere 6068HF275	145	250	14.5	12	9	21
Caterpillar	157.5 ekw Prime D175-2	D175-2	157.5	249	10.7	13	10	23
Cummins	DGFC 3435 180 kw Prime	6CTAA8.3-G2	180	315	11.5	15	14	28
Kohler	200REOZJD 180 kw Prime	John Deere 6068HF485	180	315	11.5	15	11	25
Kohler	250REOZJC 204 kw Prime	John Deere 6081HF001	204	359	10.7	17	10	27
Caterpillar	3406C 275ekw Prime	CAT 3406C	225	400	18	25	21	46
Kohler	300REOZJB 270 kw Prime	D300 12.1A65	270	462	22	24	16	41
Caterpillar	Prime 275 ekW 343 kVA	CAT 3406C TA	275	575	20	25	21	46
Kohler	400REOZDC 385 kw Prime	Detroit Diesel S60	385	635	27	31	18	50
Caterpillar	410 ekw Prime	C 15 ATAAC L-6	410	757	25	33	19	51
Kohler	500REOZVB 460 kw Prime	D500 16.1865	460	757	25.5	38	26	64
Caterpillar	500 ekw Prime	C 18 ATAAC I-6	500	918	39	43	18	62
Kohler	600REOZMB 560 kw Prime	Mitsubishi S6R-Y2PTAQ-1	560	918	39	46	29	75
Caterpillar	C27 591 ekw Prime	C 27 TA V-12	591	1000	30	48	32	80
Kohler	750REOZDB 680 kw Prime	Detroit 12V2000	680	1120	40	56	42	97
Caterpillar	725 ekw Prime	C 27 TA V-12	725	1207	52	58	38	96
Kohler	800REOZM 730 kw Prime	D800 33.9A60	730	1207	52	60	69	129
Caterpillar	C32 810 ekw Prime	C 32 TA V-12	810	1350	58	63	34	97
Kohler	900REOZDC 830 kw Prime	MTU 16V2000 G44	830	1350	58	68	47	115
Caterpillar	C32 910 ekw Prime	C 32 TA V-12	910	1528	54	75	39	114
Kohler	1000REOZM 925 kw Prime	Mitsubishi S12H-Y2PTAW-1	925	1528	54	76	47	123
Caterpillar	1000 ekw Prime	CAT 3512 TA	1000	1500	54	89	74	162
Caterpillar	1135 ekw Prime	CAT 3512 TA	1135	2300	76	109	87	196
Kohler	1250REOZDC 1180 kw	Detroit 12V4000G83	1180	2328	76	115	73	187
Caterpillar	1275 ekw Prime	CAT 3512B TA	1275	2300	75	112	67	179
Caterpillar	1360 ekw Prime	CAT 3512B TA	1360	2328	76	120	71	191
Kohler	1500REOZDC 1400 kw	Detroit 12V4000G43	1400	2328	76	115	73	187
Kohler	1600REOZM 1450 kw	D1600 65.4A60	1450	2346	69	128	126	254
GE Energy	1,500 ekw Prime	J620 E61 GE Jenbacher	1500	2350	70	87	115	201
Caterpillar	1600 ekw Prime	CAT 3516 TA V-16 4	1600	2800	50	158	109	266
Kohler	2000REOZM 1820 kw	D2000 65.4A60	1820	2882	59	162	78	240
Caterpillar	1825 ekw Prime	CAT 3516B TA V-16	1825	2282	59	159	87	246
Kohler	2250REOZDC 2100 kw	Detroit 16V4000G83	2100	3353	84	172	106	278
Kohler	2800REOZDB 2270 kw	MTU 20V4000G83	2270	3675	116	186	121	306
Kohler	2500REOZDB 2270 kw	MTU 20V4000G83	2270	3675	116	186	121	306
Kohler	2800REOZDB 2540 kw	MTU 20V4000G83	2540	4035	116	208	135	343

For Additional Information Contact:
Infinity Turbine LLC
<http://www.InfinityTurbine.com>
TEL(608) 238-6001