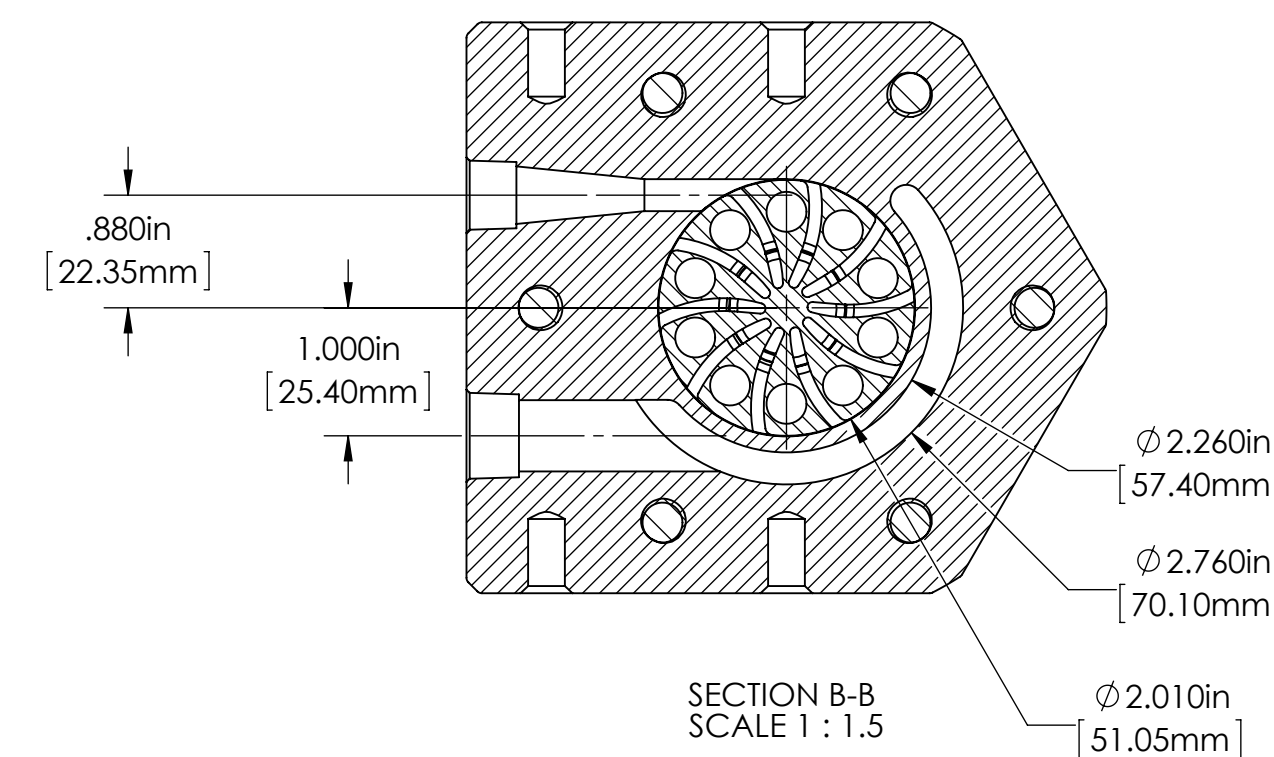
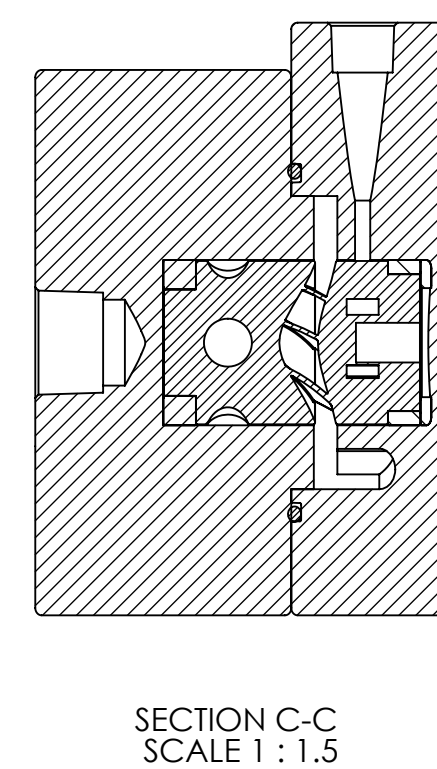
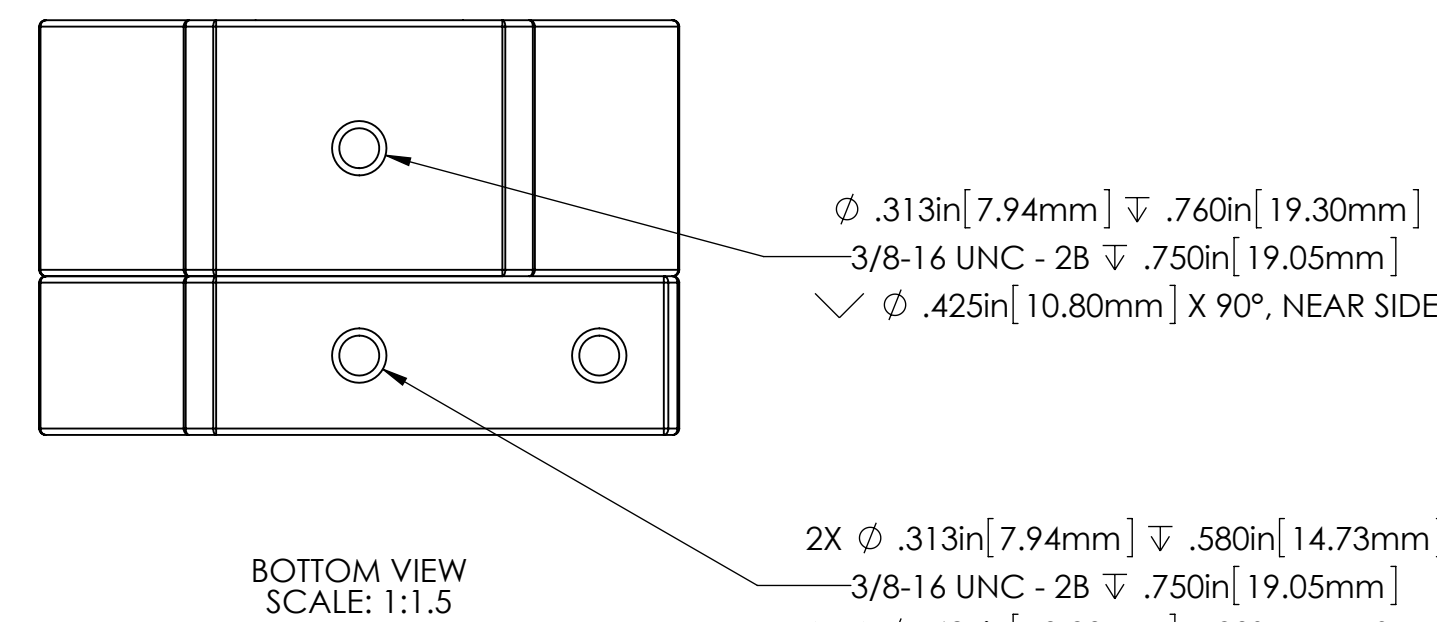
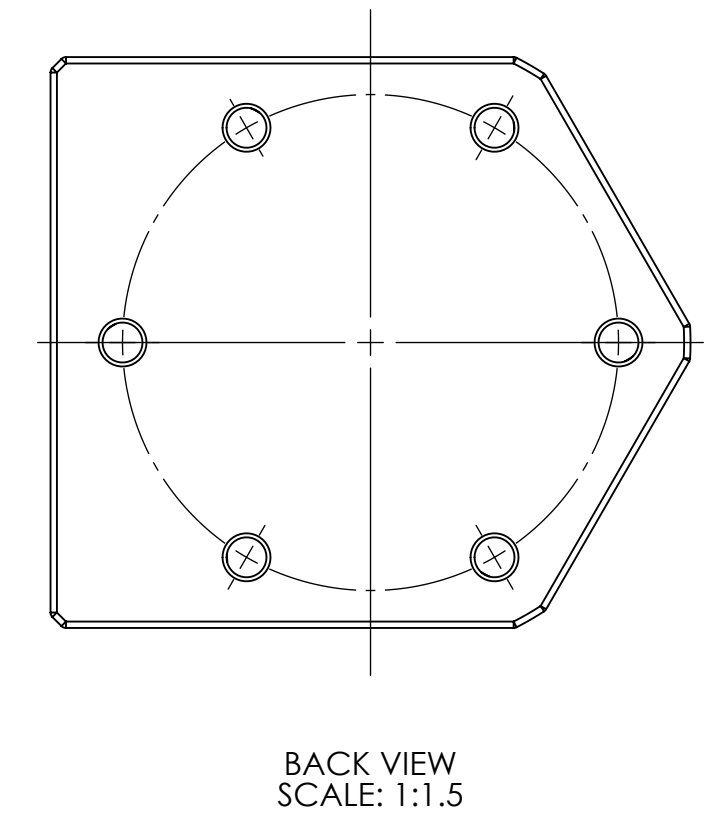
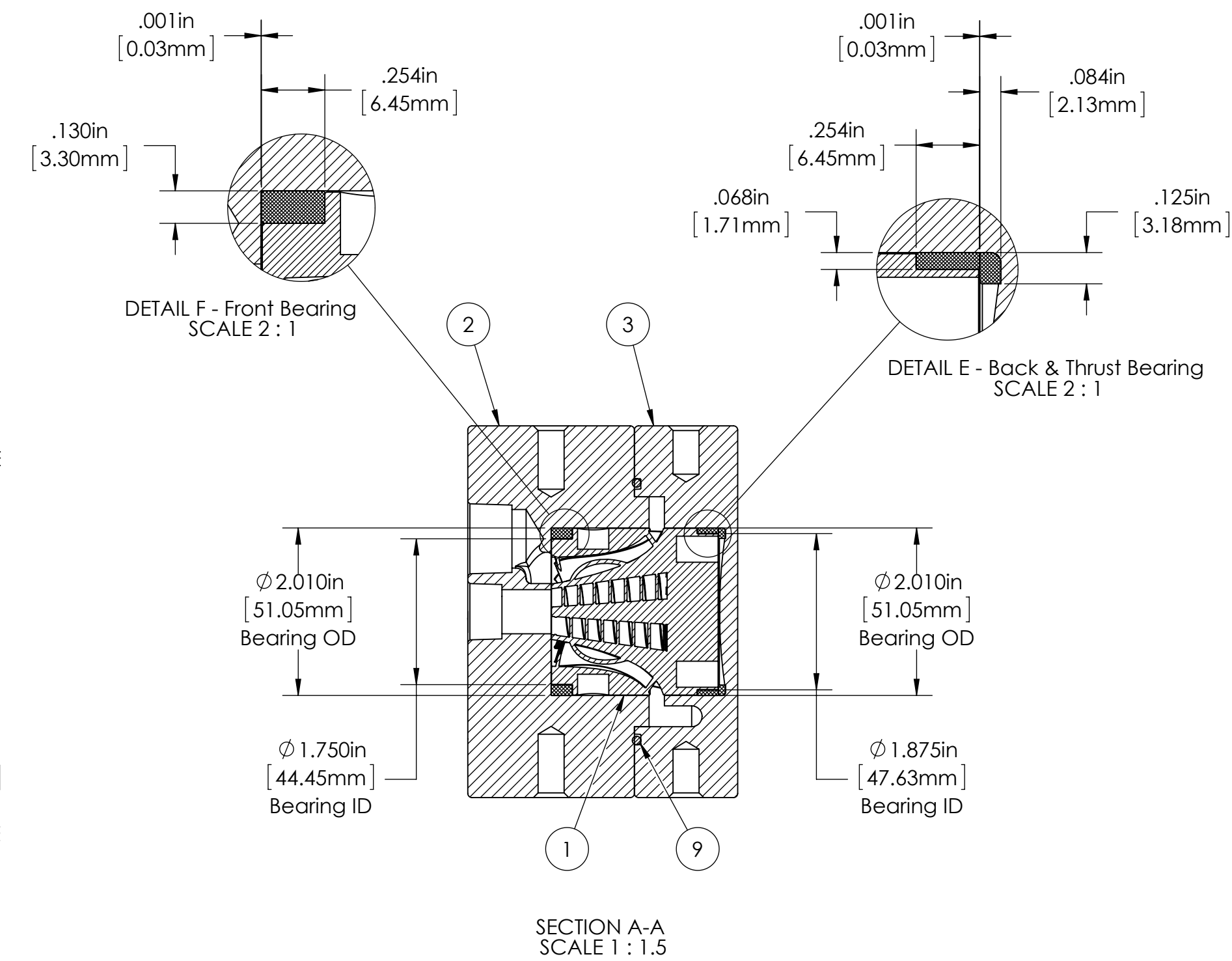
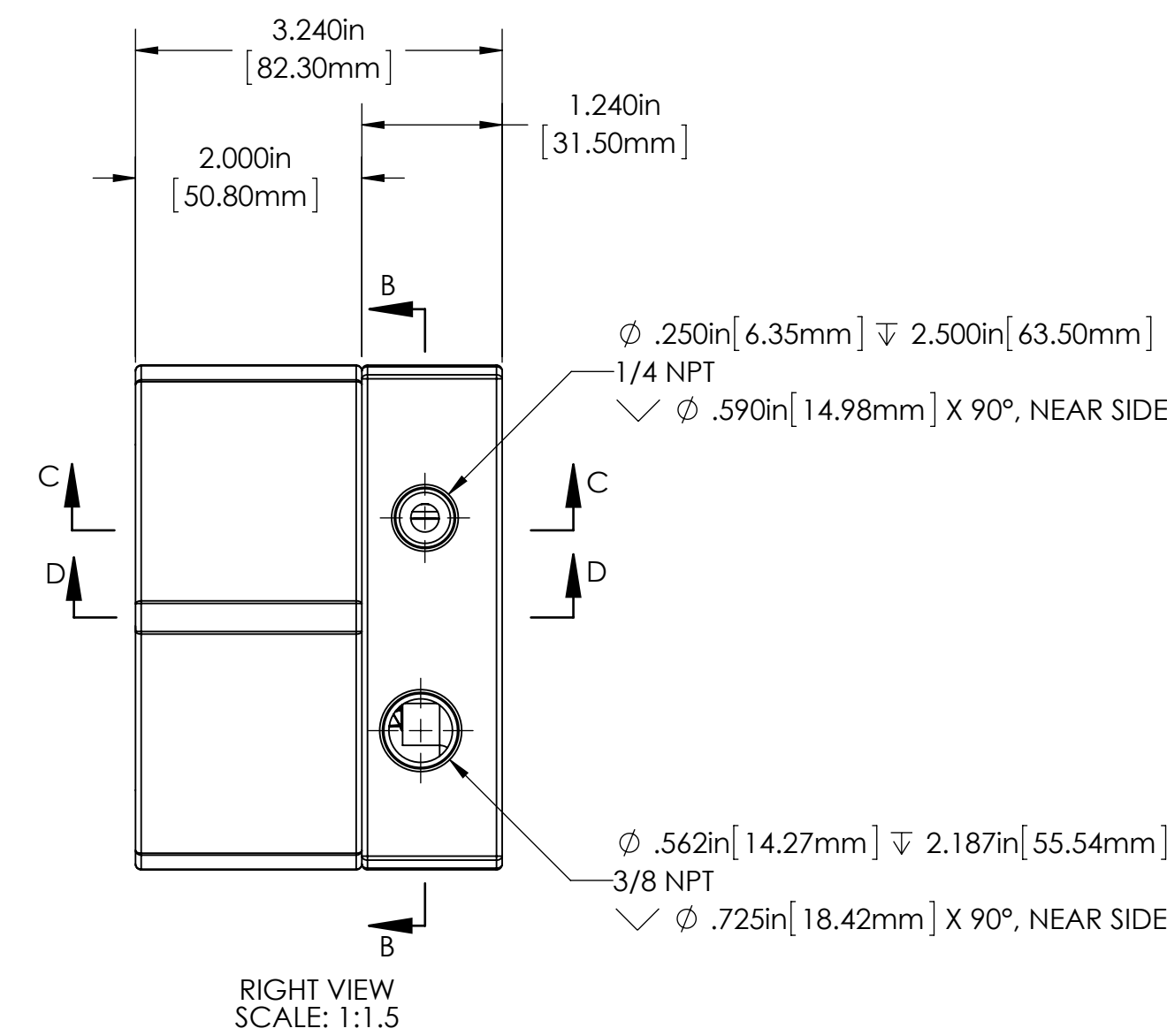
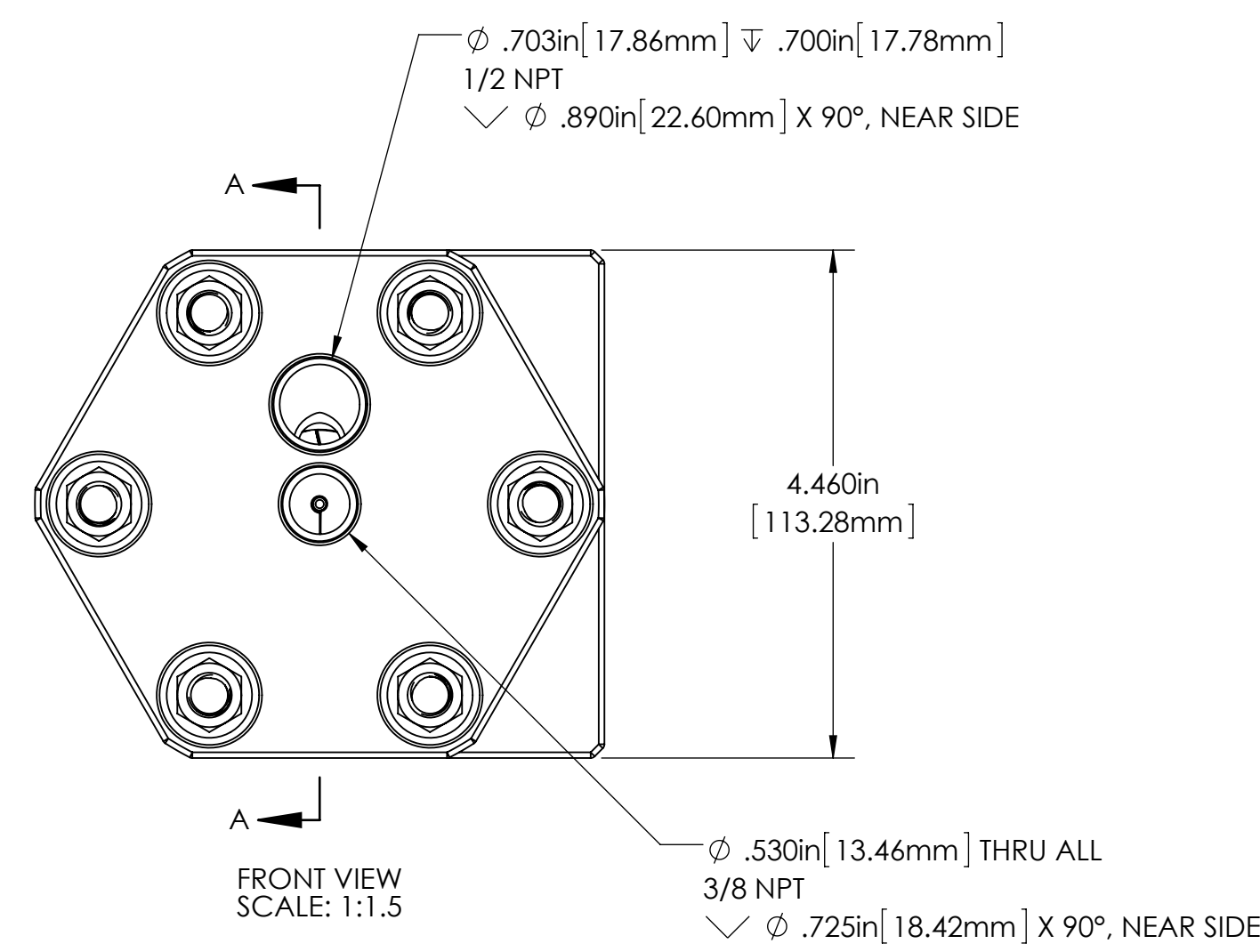
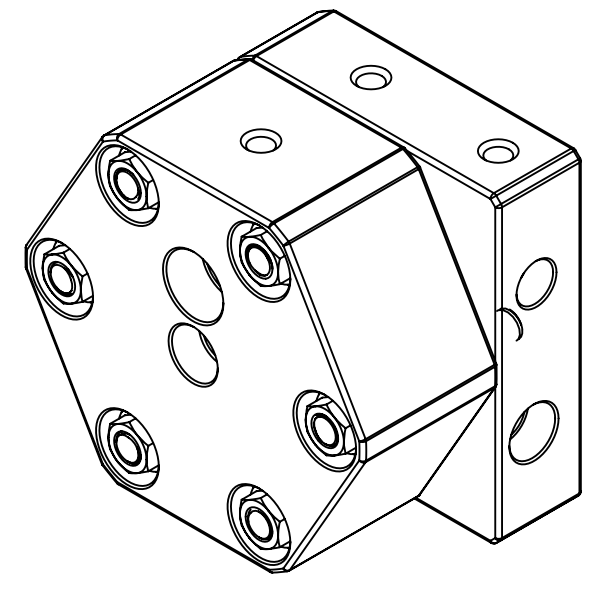
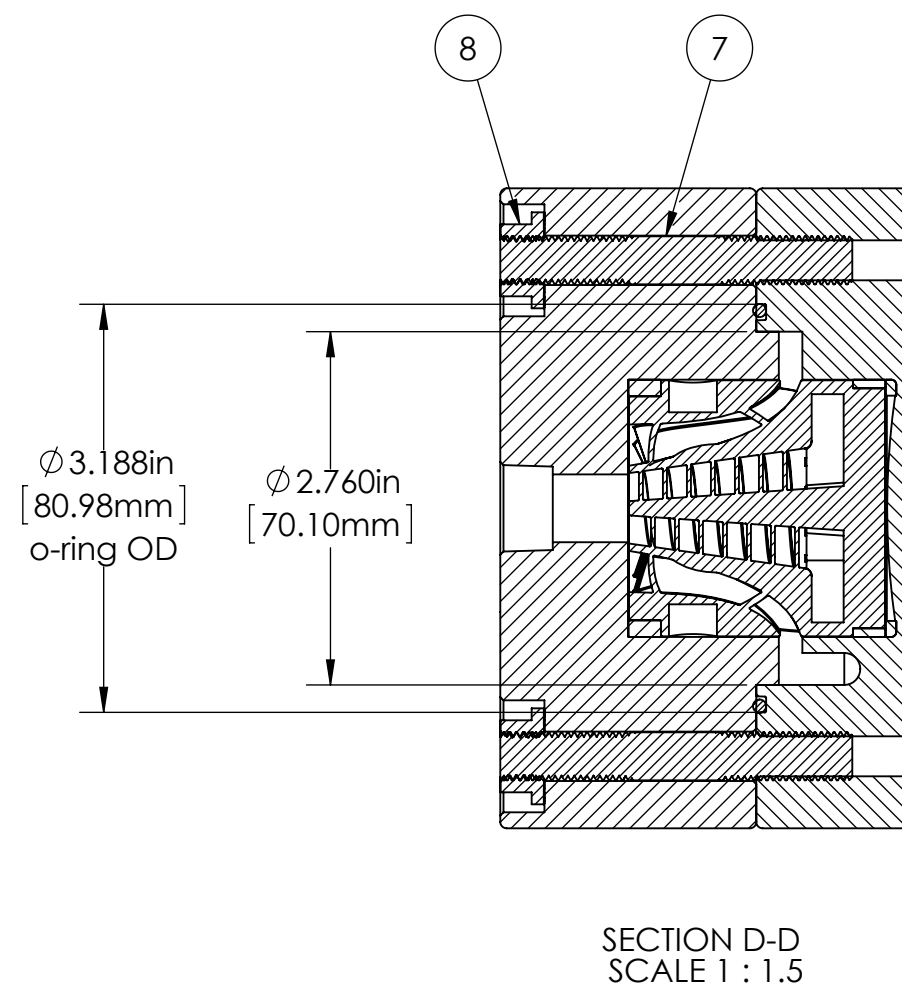
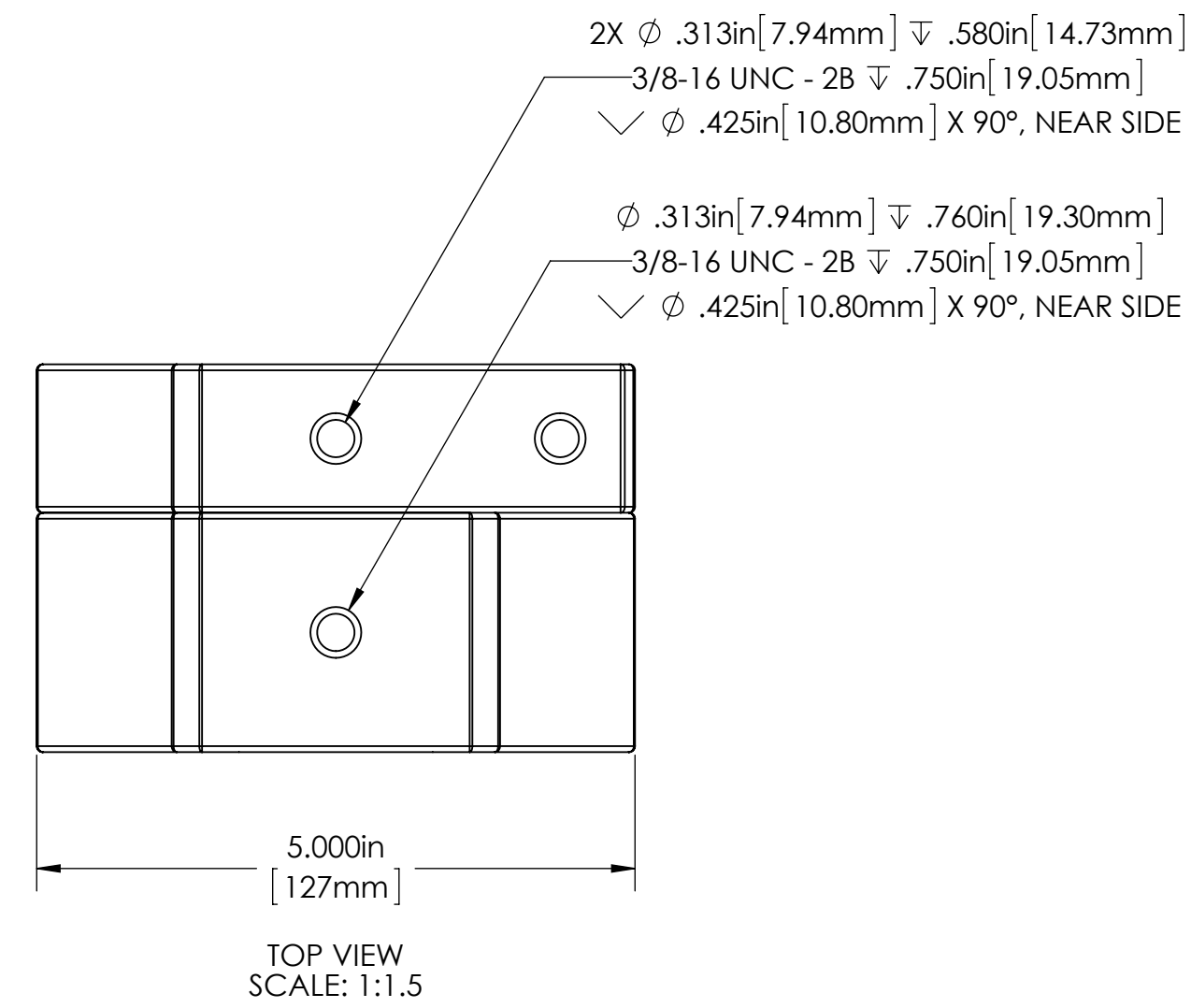


ITEM NO.	PART NUMBER	DESCRIPTION	QTY.
1	20130308_ITRm_Rotor-Pump	2013 ITRm Rotor - Pump	1
2	20130308_ITRm_Front_Block	2013 ITRm Front Block	1
3	20130308_ITRm_Back_Block	2013 ITRm Back Block	1
4	20130321_ITRm_Rotor_Front_Bearing	Graphalloy 2" OD x 1-3/4" ID x 1/4" long bearing.	1
5	20130321_ITRm_Rotor_Back_Bearing	Graphalloy 2" OD x 1-7/8" ID x 1/4" long bearing.	1
6	20130321_ITRm_Thrust_Bearing	Graphalloy 2.010" OD x 1.760" ID x 0.085" long thrust bearing.	1
7	91563A135_3-8_16_stud_X_2_3-4in	Stud 3/8"-16 Thread, 2-3/4" Overall Length - McMaster Carr P/N 91563A135 or equivalent	6
8	95922A130	Serrated-Flange Hex Locknut 3/8"-16 - McMaster Carr P/N 95922A130 or equivalent	6
9	AS568 - 151	Silicone O-ring - McMaster Carr P/N 9396K172 or equivalent	1



Copyright 2013 - Infinity Turbine, LLC - Turbine/Housing Covered Under Patents: 7146999, 7726331

UNLESS OTHERWISE SPECIFIED:		NAME	DATE
DRAWN	TOLERANCES ARE IN INCHES	Eddie	3/20/2013
CHECKED	FRACTIONAL ±		
ENG APPR.	ANGULAR MATCH ± 0.1 BEND ±		
MFG APPR.	TWO PLACE DECIMAL ± 0.01		
	THREE PLACE DECIMAL ± 0.002		
	INTERPRET GEOMETRIC TOLERANCING PER: ANSI Y14.5		
	MATERIAL		
	COMMENTS:		
NEXT ASSY	USED ON		
APPLICATION	DO NOT SCALE DRAWING		

TITLE:		INFINITY TURBINE	
2013 ITRm Assembly			
SIZE	DWG. NO.	REV	
D	20130308_ITRm_Assembly		
SCALE: 1:1	WEIGHT:	SHEET 1 OF 1	

PROPRIETARY AND CONFIDENTIAL
THE INFORMATION CONTAINED IN THIS DRAWING IS THE SOLE PROPERTY OF INFINITY TURBINE, LLC. ANY REPRODUCTION IN PART OR AS A WHOLE WITHOUT THE WRITTEN PERMISSION OF INFINITY TURBINE, LLC IS PROHIBITED.