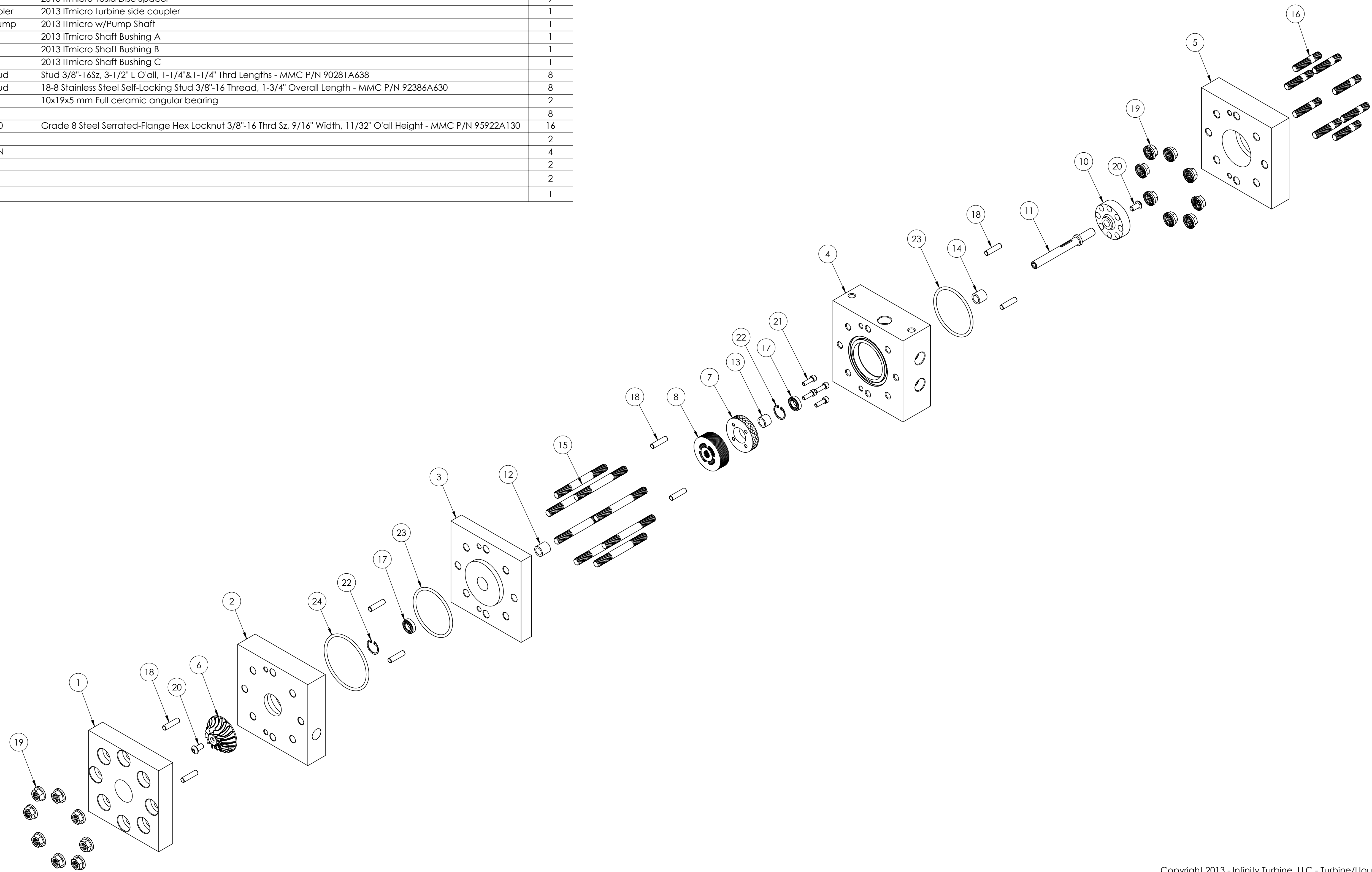


ITEM NO.	PART NUMBER	DESCRIPTION	QTY.
1	2013 Itmicro front flange	2013 Itmicro Front Flange	1
2	2013 Itmicro Front exit block	2013 Itmicro Front Exit Block	1
3	2013 Itmicro front bearing block	Itmicro Front Bearing Block	1
4	2013 Itmicro pump block	2013 Itmicro pump block	1
5	2013 Itmicro back block	2013 Itmicro Back Block	1
6	2013 Itmicro Radial Impeller noHex	2013 Itmicro Radial Impeller	1
7	2013 Itmicro cav disc	2013 Itmicro Cavitation Disc	1
8	2013 Itmicro Tesla Disc	2013 Itmicro Tesla Disc	8
9	2013 Itmicro Tesla Disc spacer	2013 Itmicro Tesla Disc Spacer	9
10	2013 Itmicro Turbine side coupler	2013 Itmicro turbine side coupler	1
11	2013 Itmicro Radial Shaft w-Pump	2013 Itmicro w/Pump Shaft	1
12	2013 Itmicro Shaft Bushing A	2013 Itmicro Shaft Bushing A	1
13	2013 Itmicro Shaft Bushing B	2013 Itmicro Shaft Bushing B	1
14	2013 Itmicro Shaft Bushing C	2013 Itmicro Shaft Bushing C	1
15	3-8-16--3-1-2in Double End Stud	Stud 3/8"-16Sz, 3-1/2" L O'all, 1-1/4"&1-1/4" Thrd Lengths - MMC P/N 90281A638	8
16	3-8-16--1--3-4in Double End Stud	18-8 Stainless Steel Self-Locking Stud 3/8"-16 Thread, 1-3/4" Overall Length - MMC P/N 92386A630	8
17	DIN 625 SKF - SKF 61800	10x19x5 mm Full ceramic angular bearing	2
18	ASME B18.8.2 - 0.2502x1		8
19	serrated flange nut 95922A130	Grade 8 Steel Serrated-Flange Hex Locknut 3/8"-16 Thrd Sz, 9/16" Width, 11/32" O'all Height - MMC P/N 95922A130	16
20	SBHCSCREW 0.25-20x0.5-HX-N		2
21	HX-SHCS 0.19-32x0.625x0.625-N		4
22	B27.7M - 3BM1-19		2
23	AS568 - 230		2
24	AS568 - 233		1

Notes:

1. - CAD is maintained and any discrepancy between Solid model dataset and supplied prints, the Solid model takes precedence.
2. - Material to be per part drawings.
3. - Shaft concentricity to Main bearing block bores to be .002"



ISOMETRIC VIEW
SCALE: 3:8

Copyright 2013 - Infinity Turbine, LLC - Turbine/Housing Covered Under Patents: 7146999, 7726331

UNLESS OTHERWISE SPECIFIED:		NAME	DATE
DIMENSIONS ARE IN INCHES		Eddie	2/02/2013
TOLERANCES:			
FRACTIONAL ±			
ANGULAR MATCH ± 0.1 BEND ±			
TWO PLACE DECIMAL ± 0.01			
THREE PLACE DECIMAL ± 0.002			
INTERPRET GEOMETRIC TOLERANCING PER: ANSI Y14.5			
MATERIAL:			
PROPRIETARY AND CONFIDENTIAL			
THE INFORMATION CONTAINED IN THIS DRAWING IS THE SOLE PROPERTY OF INFINITY TURBINE, LLC. ANY REPRODUCTION IN PART OR AS A WHOLE WITHOUT THE WRITTEN PERMISSION OF INFINITY TURBINE, LLC IS PROHIBITED.			
APPLICATION	DO NOT SCALE DRAWING		

SIZE	DWG. NO.	REV
D	2013 Itmicro Radial w-Pump_exp	
SCALE: 1:1	WEIGHT:	SHEET 1 OF 1

2013 Itmicro Radial w-Pump_exp