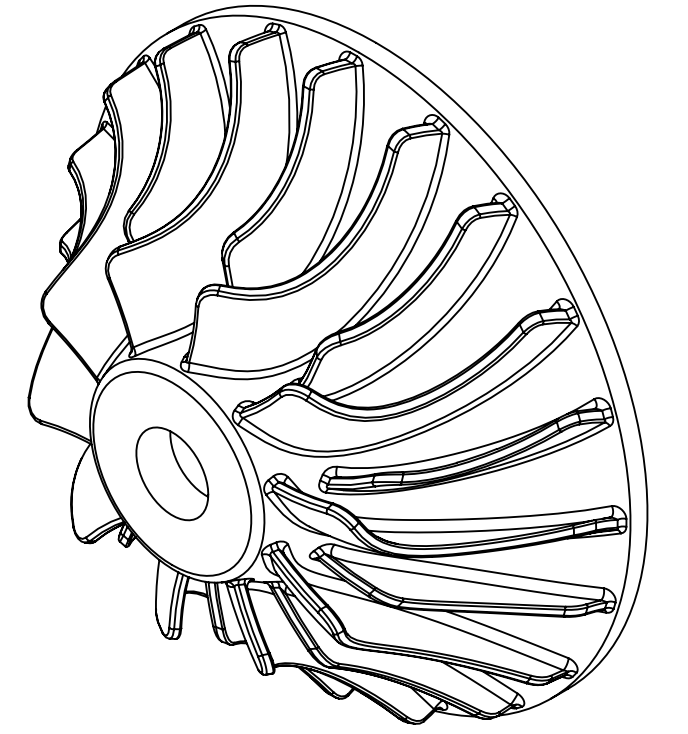
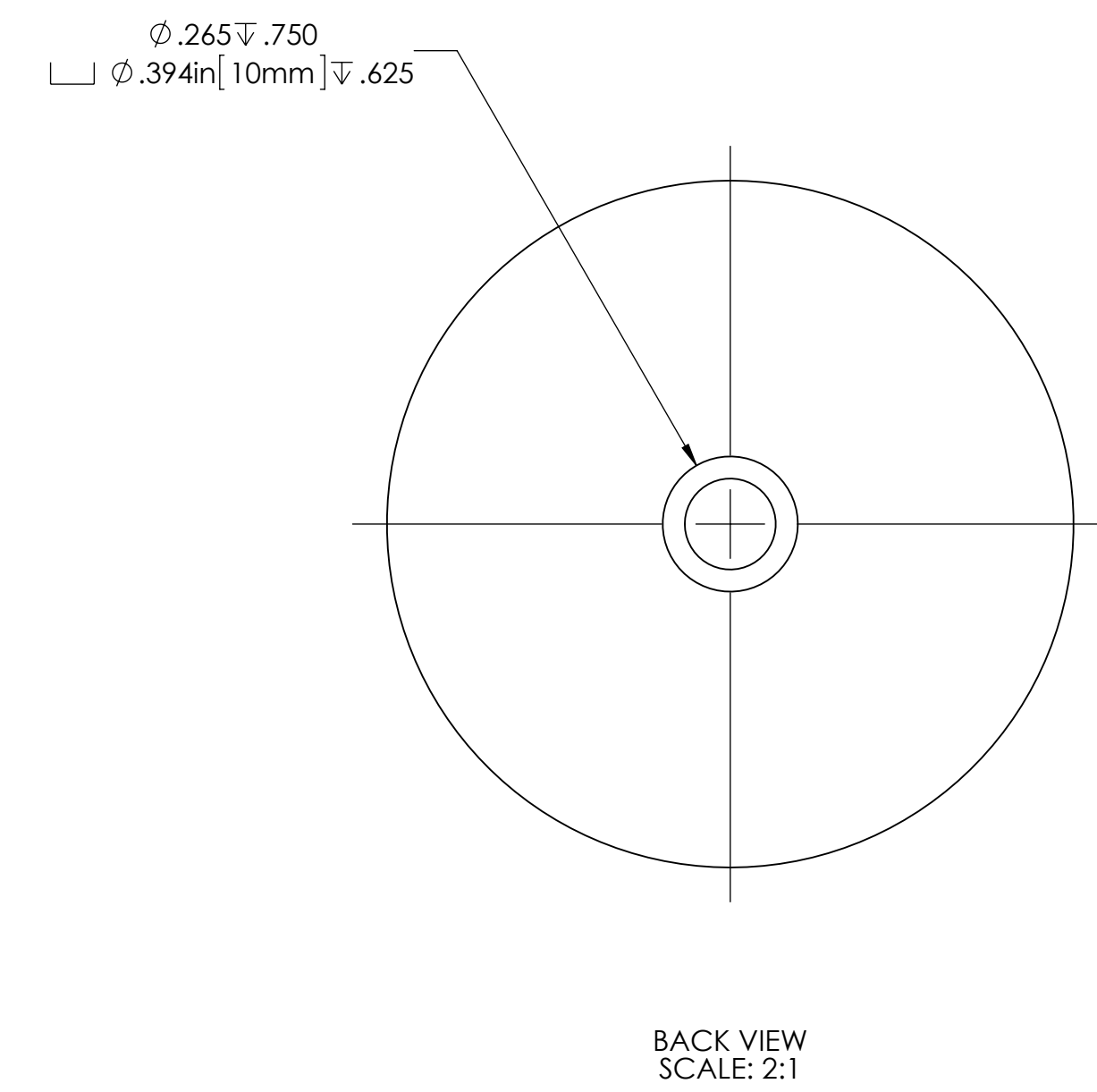
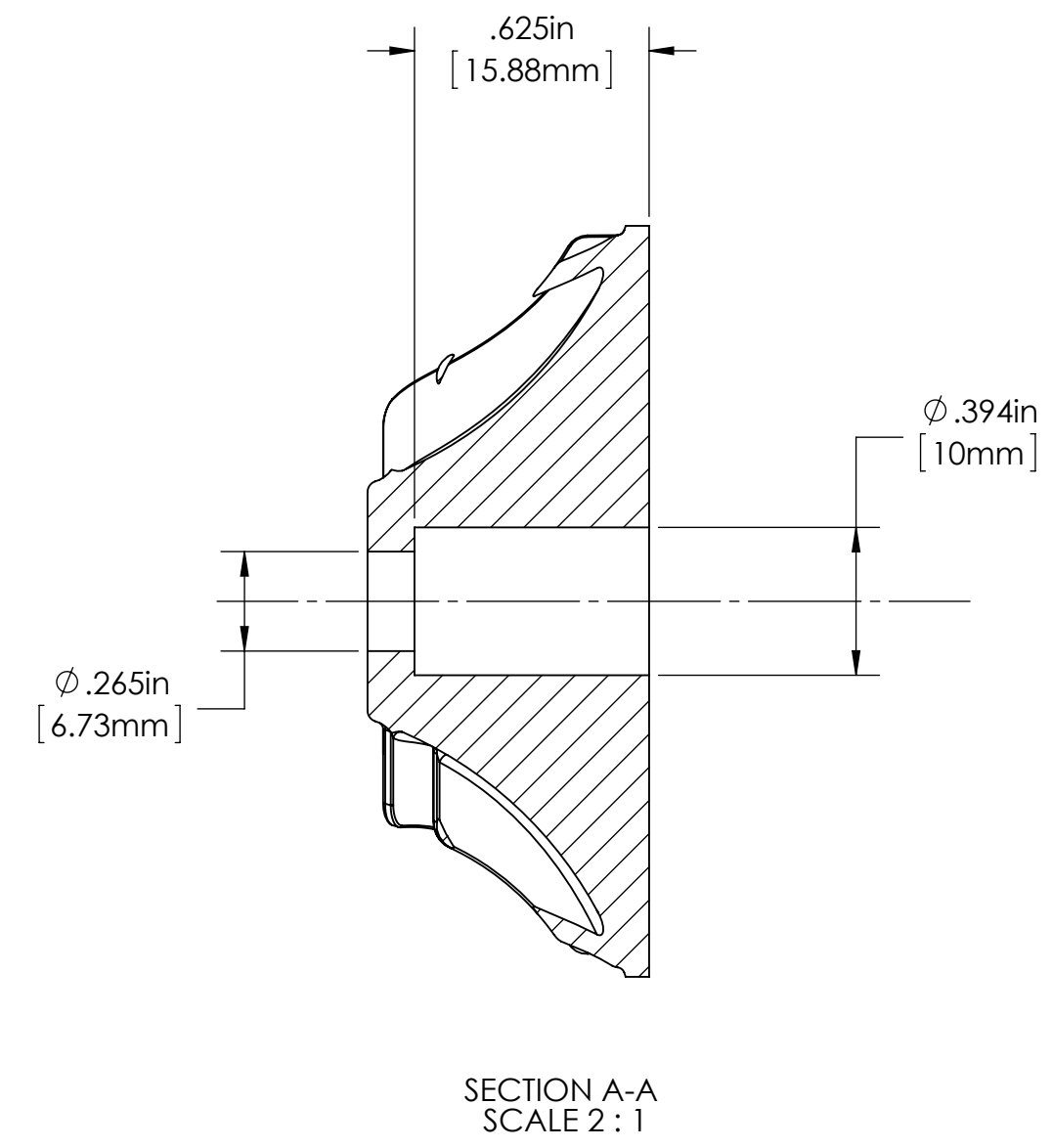
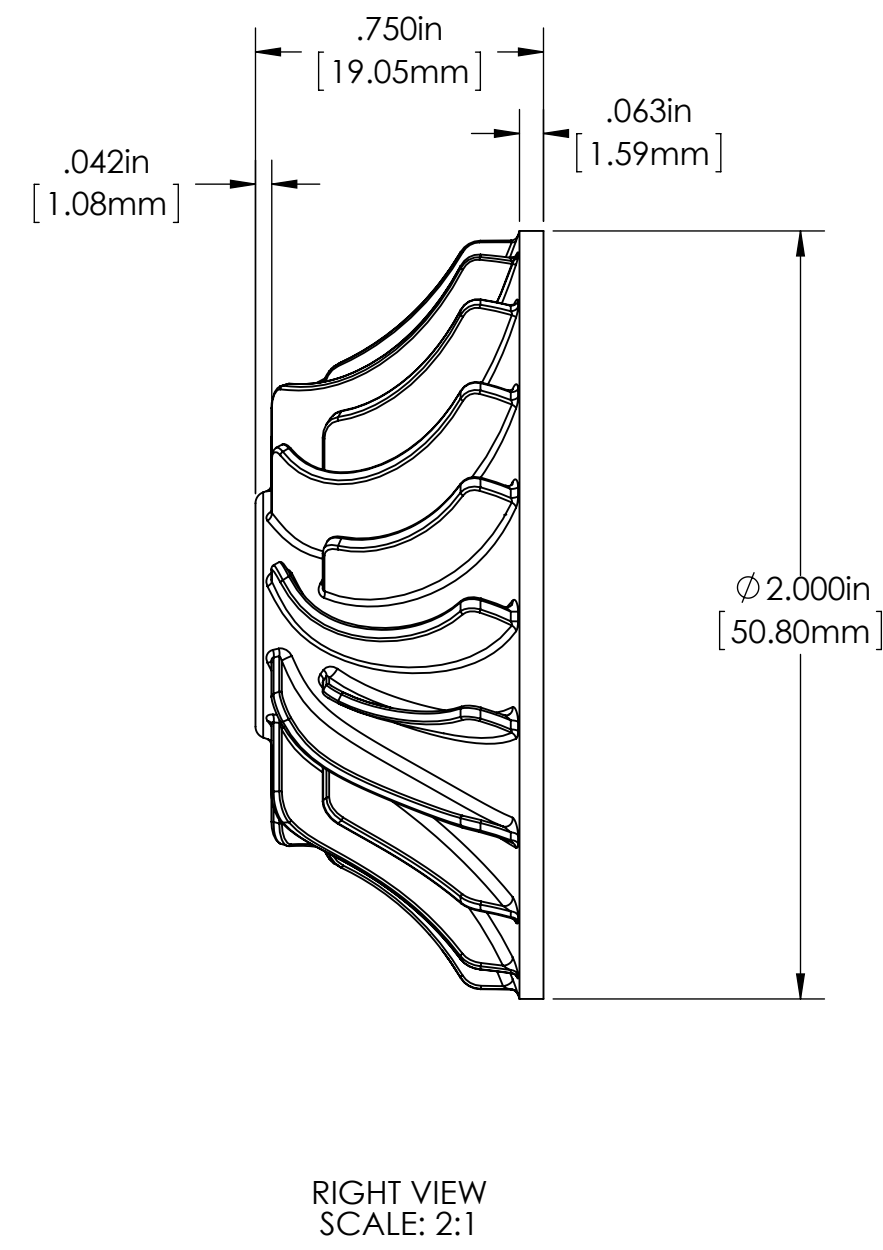
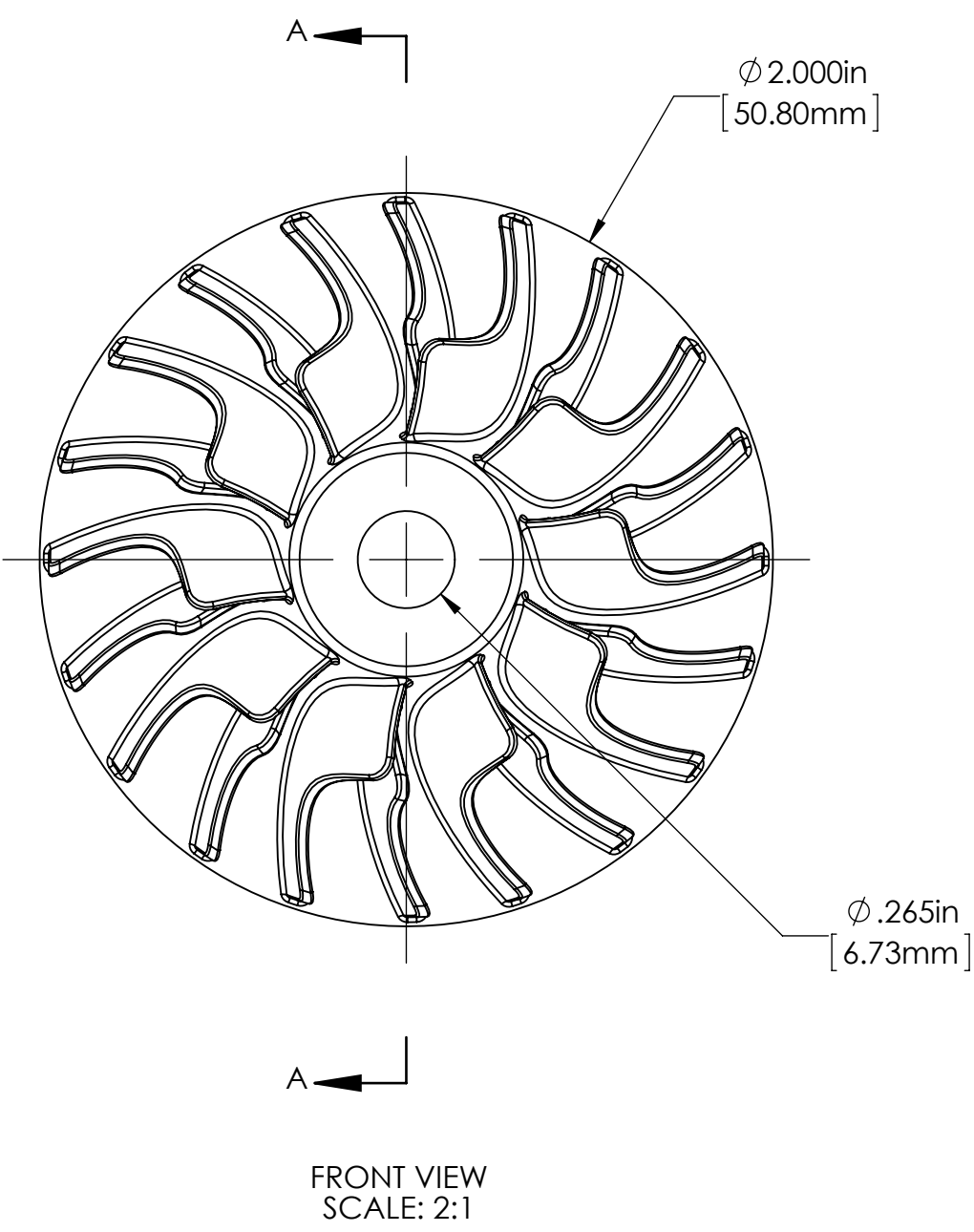


Notes:

1. - CAD is maintained and any discrepancy between Solid model dataset and supplied prints, the Solid model takes precedence.
2. - Material to be determined.
3. - Impeller bore concentricity to Main bearing block bore to be .002"



ISOMETRIC VIEW
SCALE: 2:1



Copyright 2013 - Infinity Turbine, LLC - Turbine/Housing Covered Under Patents: 7146999, 7726331

PROPRIETARY AND CONFIDENTIAL
THE INFORMATION CONTAINED IN THIS DRAWING IS THE SOLE PROPERTY OF INFINITY TURBINE, LLC. ANY REPRODUCTION IN PART OR AS A WHOLE WITHOUT THE WRITTEN PERMISSION OF INFINITY TURBINE, LLC IS PROHIBITED.

UNLESS OTHERWISE SPECIFIED:		NAME	DATE
DIMENSIONS ARE IN INCHES		Eddie	2/02/2013
TOLERANCES:			
FRACTIONAL ±			
ANGULAR MATCH ± 0.1 BEND ±			
TWO PLACE DECIMAL ± 0.01			
THREE PLACE DECIMAL ± 0.002			
INTERPRET GEOMETRIC TOLERANCING PER: ANSI Y14.5			
MATERIAL			
FINISH			
APPLICATION	DO NOT SCALE DRAWING		

INFINITY TURBINE	
TITLE:	2013 Itmicro Radial Impeller
SIZE	DWG. NO.
D	2013 Itmicro Radial Impeller noHex
SCALE: 1:1	WEIGHT: SHEET 1 OF 1

REV
D
2013 Itmicro Radial Impeller noHex