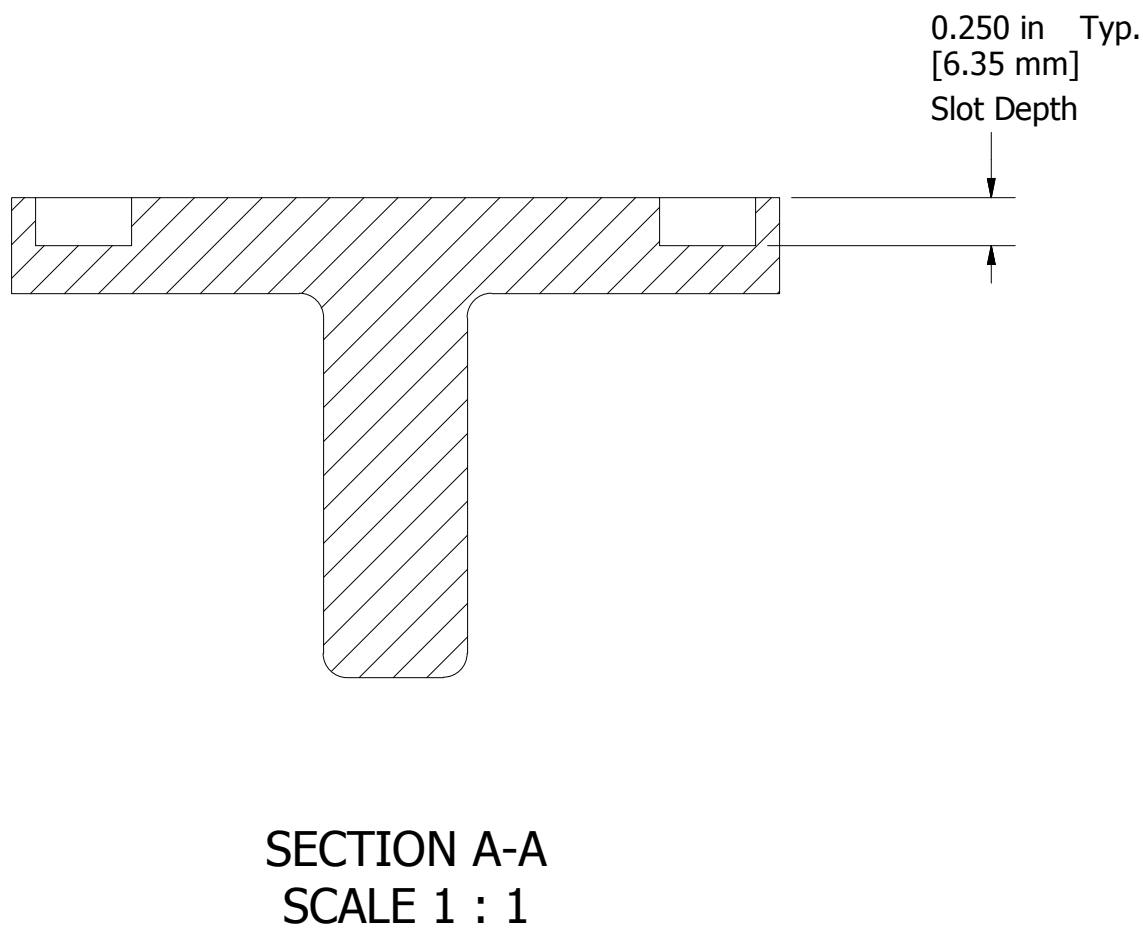
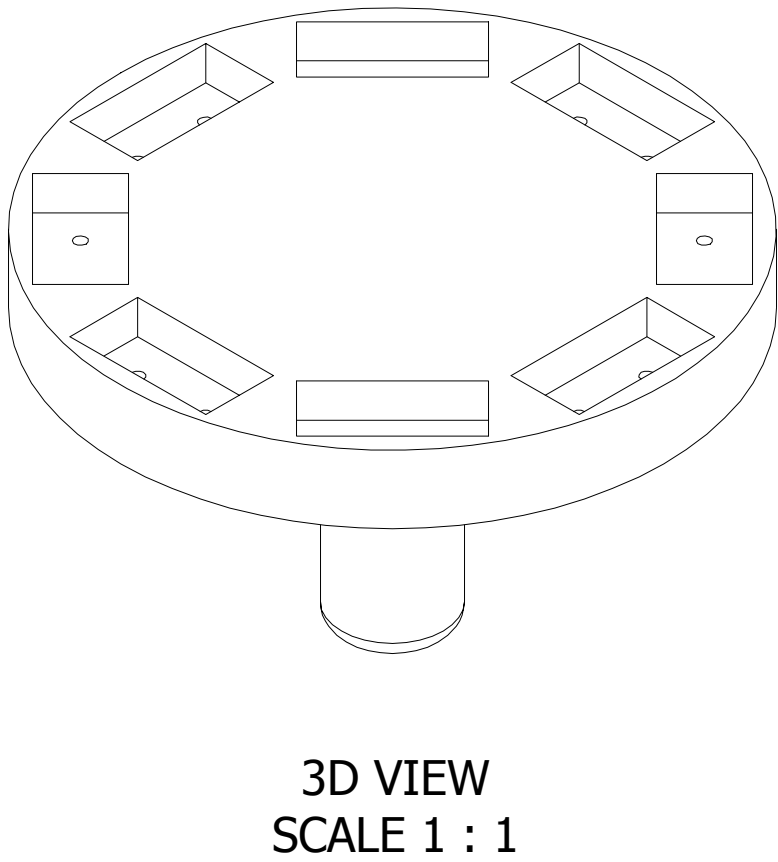
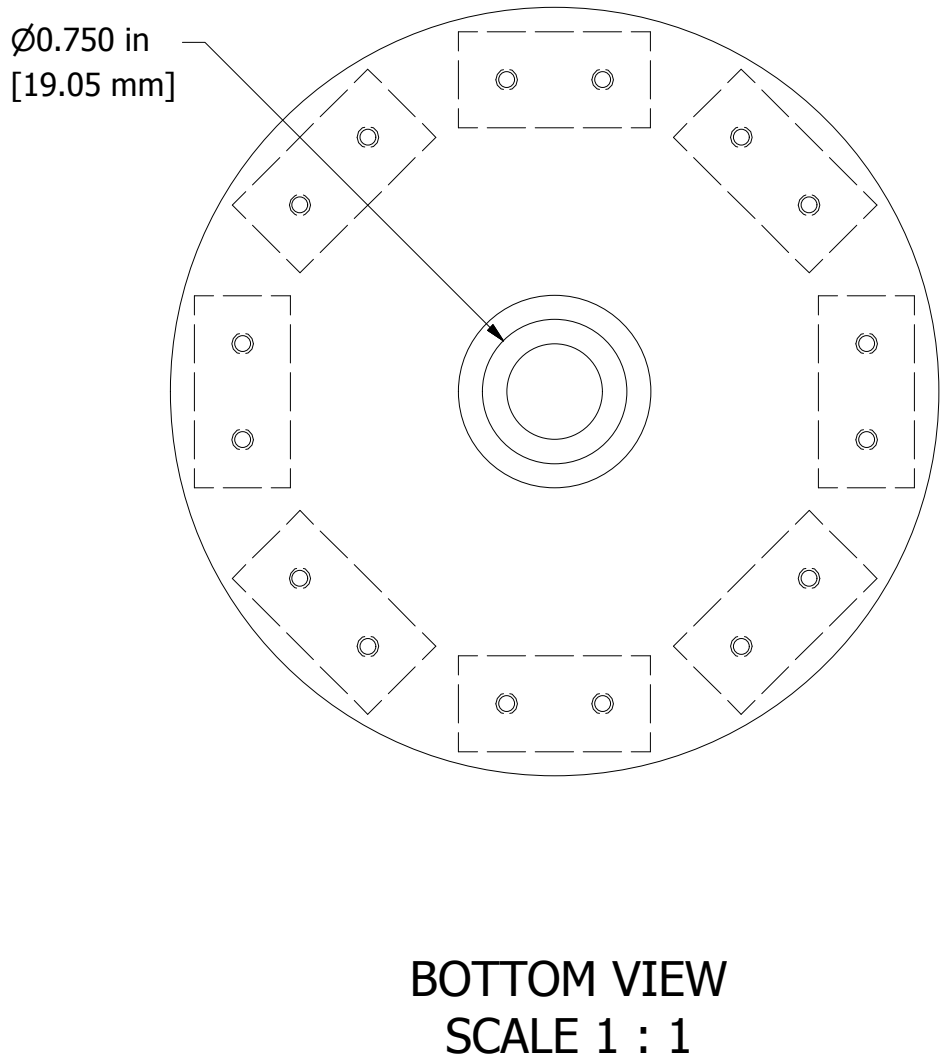
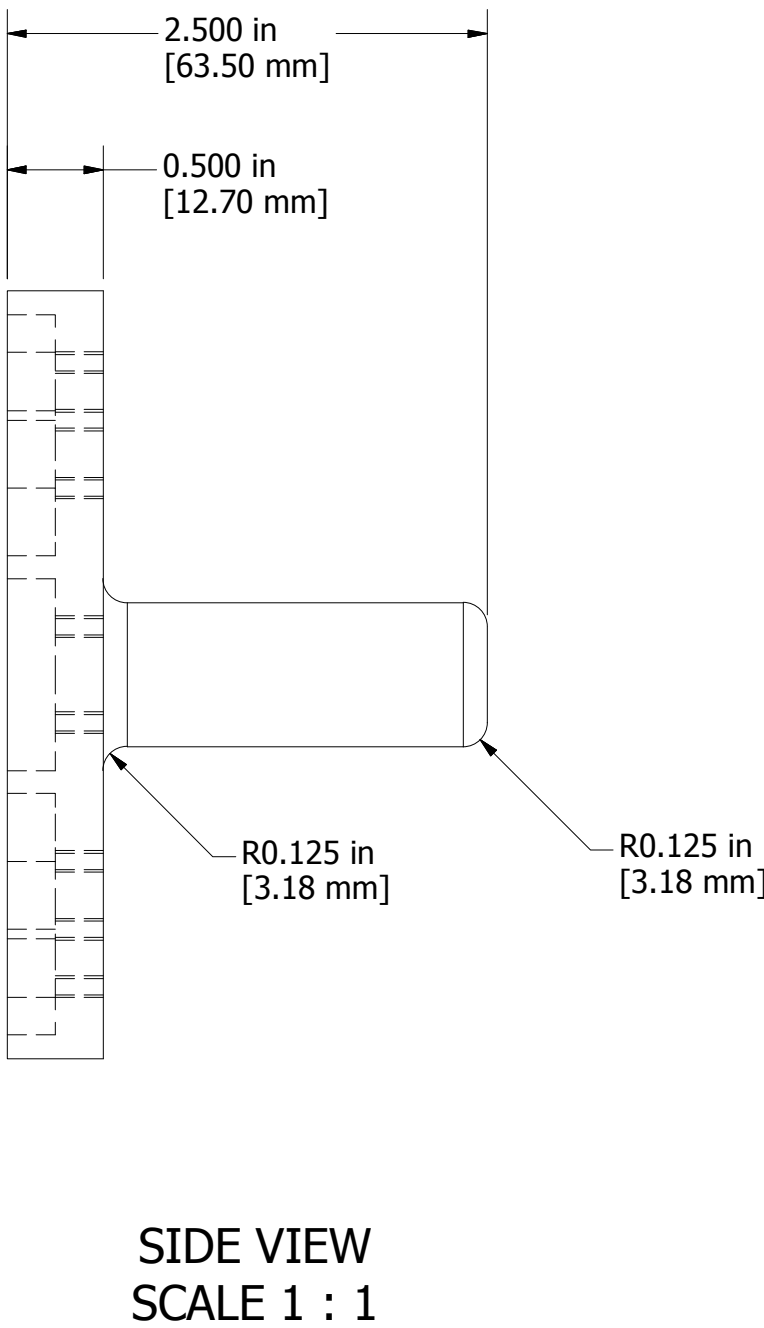
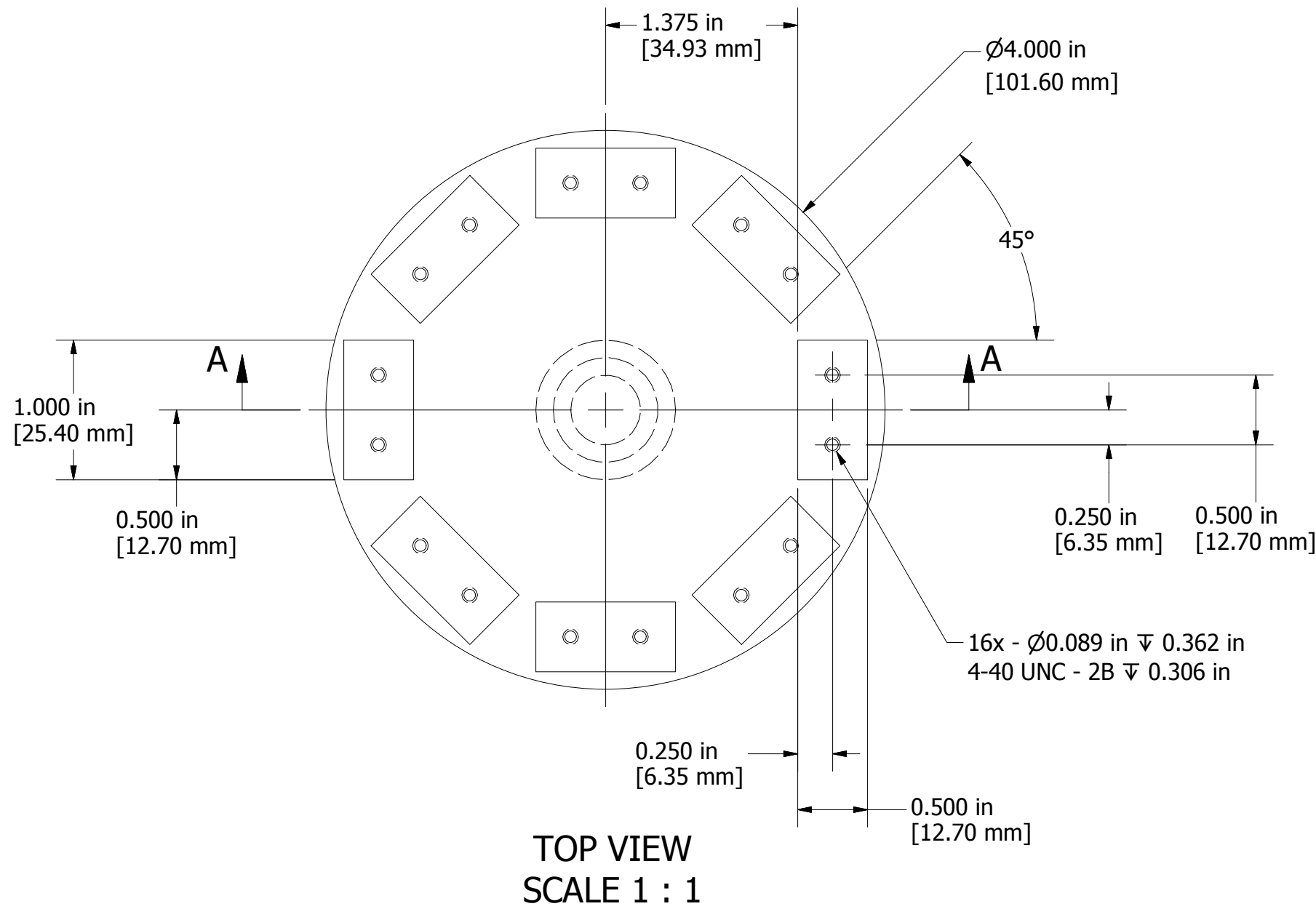


Notes:

1. - CAD is maintained and any discrepancy between Solid model dataset and supplied prints, the Solid model takes precedence.
2. - Rotor shaft concentricity to Low speed rotor to be .002".



Copyright 2012 - Infinity Turbine, LLC

Turbine/Housing Covered Under  
Patents: 7146999, 7726331

**PROPRIETARY AND CONFIDENTIAL**  
THE INFORMATION CONTAINED IN THIS DRAWING  
IS THE SOLE PROPERTY OF INFINITY TURBINE, LLC.  
ANY REPRODUCTION IN PART OR AS A WHOLE  
WITHOUT THE WRITTEN PERMISSION OF  
INFINITY TURBINE, LLC IS PROHIBITED.

UNLESS OTHERWISE NOTED:  DIMENSIONS ARE IN INCHES TOLERANCES: FRACTIONAL ± ANGULAR: MATCH ± 0.1 BEND ± TWO PLACE DECIMAL ± 0.01 THREE PLACE DECIMAL ± 0.002  INTERPRET GEOMETRIC TOLERANCING PER: ANSI Y14.5  MATERIAL: Aluminum or Equivalent  FINISH: N/A  DO NOT SCALE DRAWING	DRAWN Eddie	12/3/2012
	CHECKED	
	QA	
	MFG	
	APPROVED	

SHEET 1 OF 1		
--------------	--	--